

Case Study

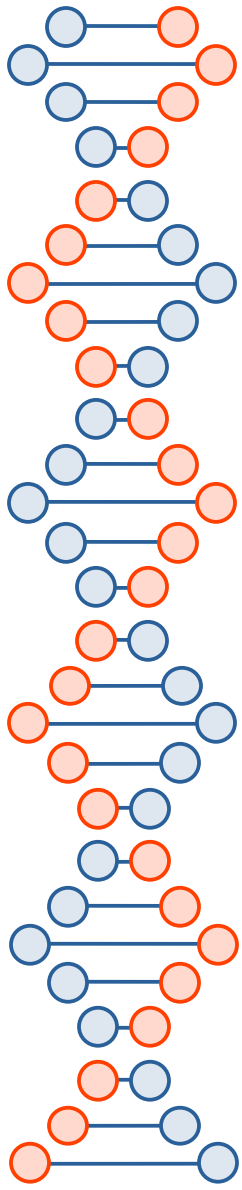
African Swine Fever Virus (ASFV)

Phylo-Genomic & Pop-Genomic Analysis

Project Coordinators:
Dr Charles Adeola (KIZ) & Dr Weigang Qiu (Hunter/CUNY)

System Administrator:
Ir. Liu Bei (刘贝)

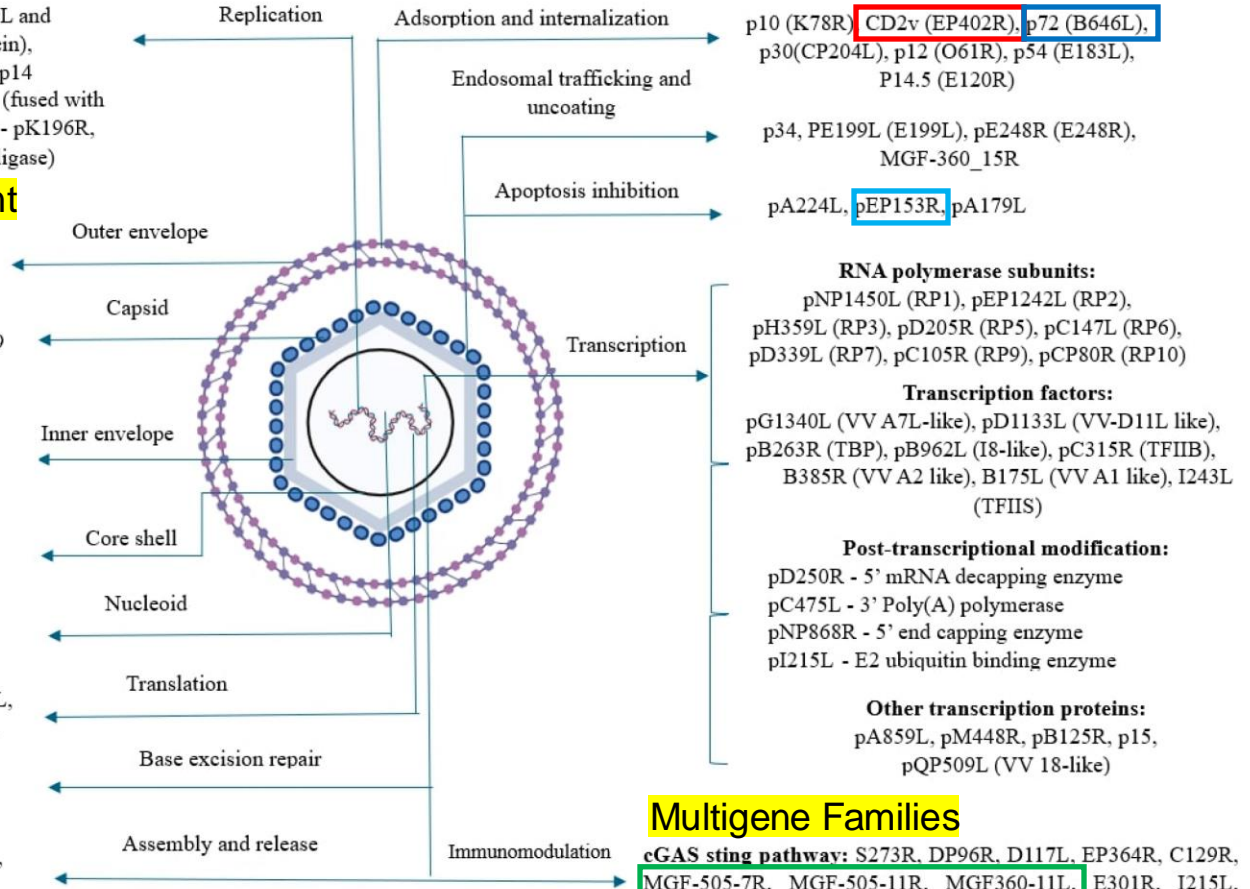
Computational Genomics Course
KIZ, Fall 2024



pC962R (Primase), pG1211R (DNA pol), QP509L and Q706L (Helicases), pA104R (DNA binding protein), pP1192R (DNA topoisomerase II), p10, p37 and p14 (nucleocytoplasmic shuttling proteins), pF1055L (fused with DNA primase), pE301R (Sliding clamp), dNTPs - pK196R, pA240L, pF134L, pF778R, pE165R, pNP419L (ligase)

Serotype determinant

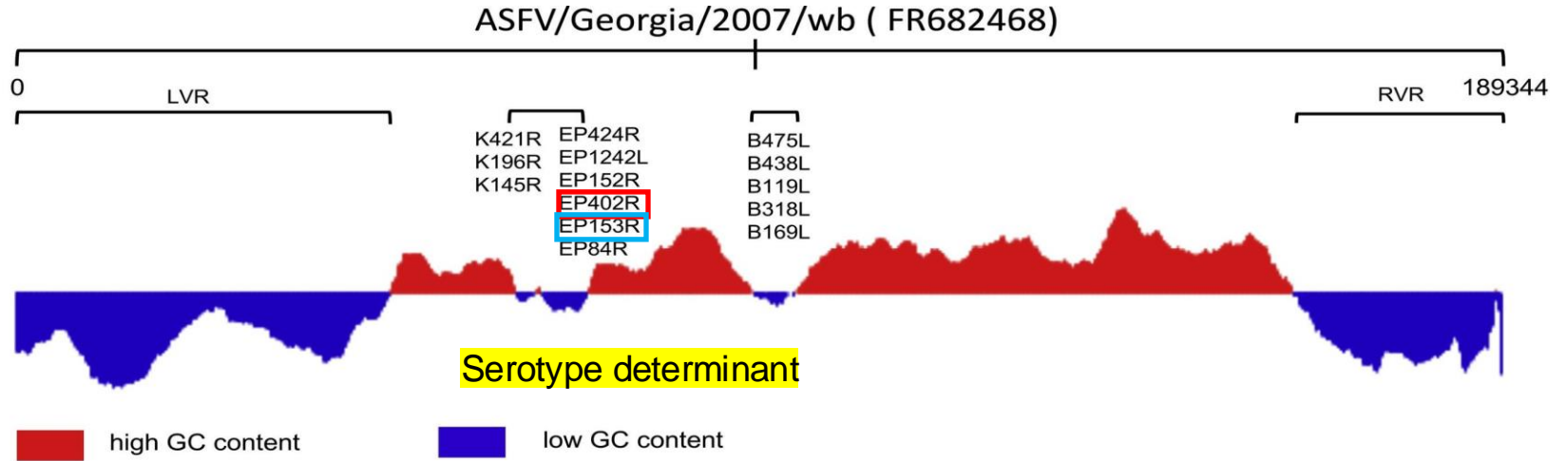
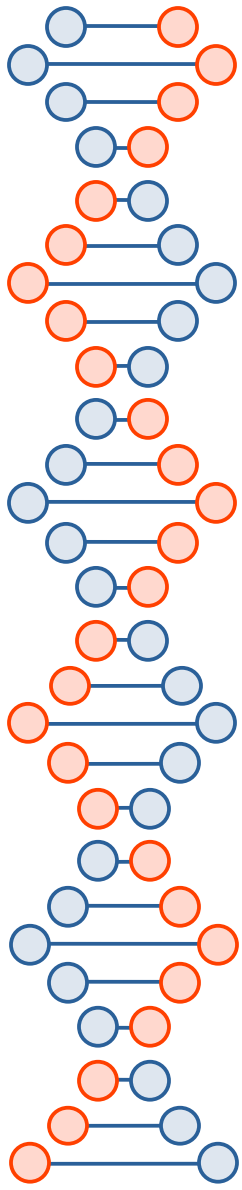
p12 (O61R), CD2V/pEP402R (E402R), p22 (KP177R)
 p72 (B646L), pH240R (H240R), pM1249L (M1249L), p17 (D117L), p14.5 (E120R), p49 (B438L)
 p12 (O61R), p22 (KP177R), CD2V/pEP402R (E402R)
 pS273R (S273R)
 pp220 (CP2475L) - p150, p37, p34, p14, p5
 pp62 (CP530R) - p35, p15, p8
 pA104R (A104R), p10 (K78R)
 pI215L, pE66L, MGF 110-7L, pA224L, pDP71L, pEP424R, pD250R, pI73R
 pO174L (Pol X), pD345L (5'/3' exonuclease), pE296R (AP endonuclease)
 A104R, K78R(p10), EP84R, M1249L, B318L, B438L, B354L, B602L, B646L (p72), p150, p34, p35, p15, p8, D117L (p17), D345L, S273R, H240R, E138L, E120R



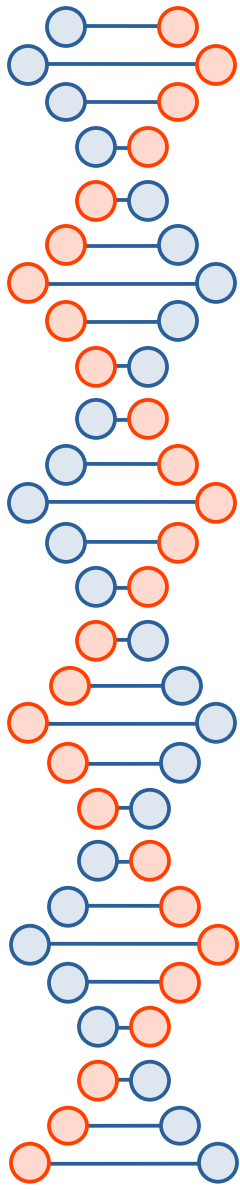
Multigene Families

cGAS sting pathway: S273R, DP96R, D117L, EP364R, C129R, MGF-505-7R, MGF-505-11R, MGF360-11L, E301R, I215L, MGF360-14L, MGF360-13L, MGF505-3R, L83L, E120R, I226R, M1249L, A137R, E184L, CD2v, QP383R, MGF505-2R
NF-κB pathway: A238L, D345L, MGF505-7R, F317L, MGF360-12L, H240R, EP402R, DP96R, A224L, I329L, K205R, E120R, I226R
JAK-STAT pathway: MGF505-7R, MGF360-9L, MGF360-10L, I215L, H240R, EP402R, I267L, A104R
NFAT pathway: A238L
NLRP3 inflammasome activation: H240R, S273R, MGF505-7R

[Venkateswaran et al \(2024\).
Animals, 14\(15\), 2187.](#)



[Malogolovkin & Kolbasov \(2019\). "Genetic and antigenic diversity of African swine fever virus". *Virus Research* 271:197673.](#)



[Forth et al \(2020\) PLoS Pathog 16\(8\): e1008779.](#)

[Entfellner et al \(2024\) Viruses 16\(9\), 1466](#)

II (2) 2

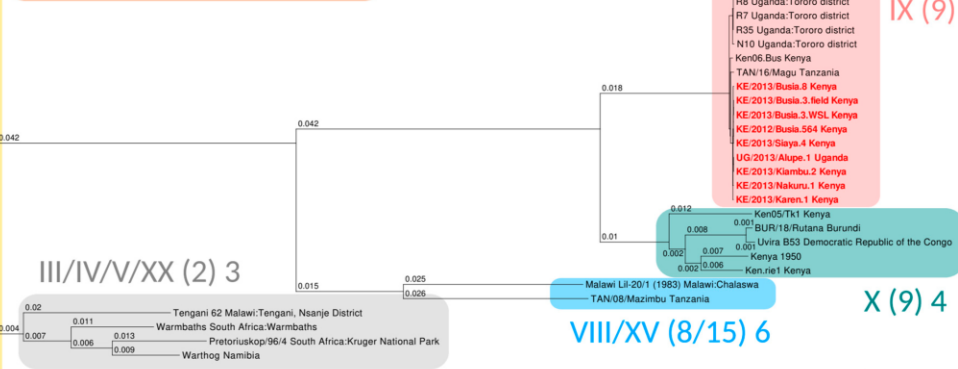
I (1) 1



IX (9) 5

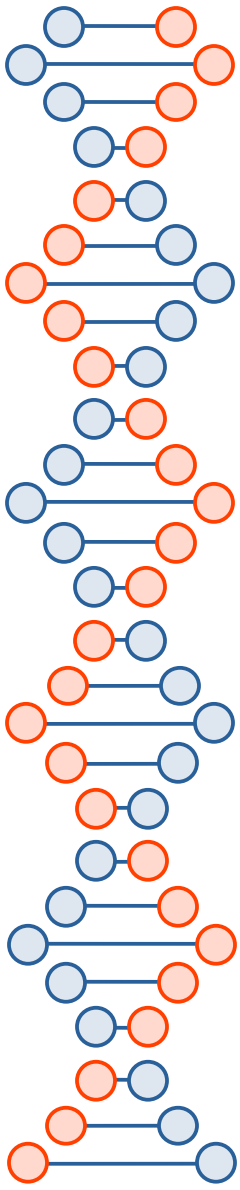


X (9) 4



0.01

Project Overview: Biological Hypotheses



Genome Phylogeny

Align genomes to a ref genome

Call SNPs

Infer phylogeny

Annotate phylogeny

Pop Genome Analysis

Population structure & gene flow

Estimate recombination & mutation rates

Identify recombination hotspots

Pan-Genome Analysis

Identify core & variable genomes

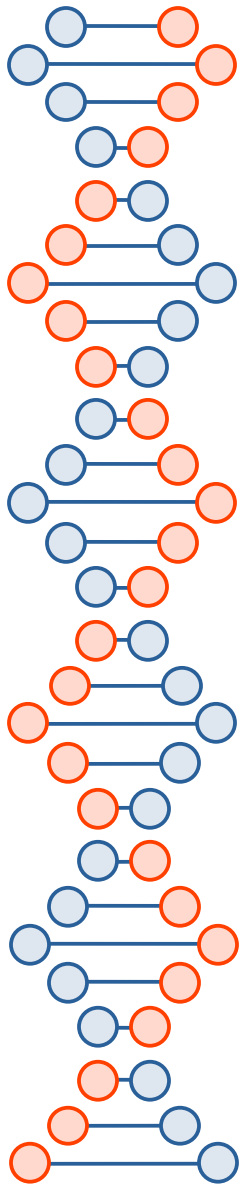
Identify gene gains and losses

Genome-Wide Association Study (GWAS)

Host specificity

Virulence genes

Project Overview: Software Tools



Genome Phylogeny

Minimap2 &
Samtools

VCFTools &
BCFTools

IQ-Tree

iToL

Pop Genome Analysis

VCFTools &
BCFTools

ClonalFrameML

Pan-Genome Analysis

Ppangolin

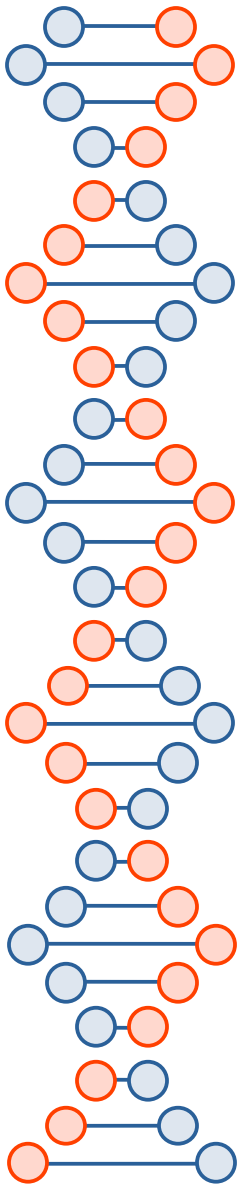
APE package
(R)

Genome-Wide Association Study (GWAS)

BinaryPGLMM
(R)

GEMMA

Project Overview: Data-Science Skills



Domain Knowledge

Mol Biology

Genomics

Evolution: pop genetics & phylogenetics

Linux & Git

Batch-processing

Source control & distributed computing

Commands (CLI)

Python & Notebook

Pre-processing

BioPython

BioPerl / BpWrapper

Machine learning

R/RStudio/R Markdown

Visualization

Statistical analysis

Modeling & inference